

NETFLUX MONO CARTRIDGE FILTER



INSTALLATION & USER MANUAL

Please read carefully and keep for future reference

! PLEASE READ CAREFULLY!

**These installation instructions are an integral part of the product.
They must be given to the installer and kept by the user.**

If you lose the manual, please refer to the website: www.poolex.fr

The instructions and warnings contained in this manual must be read carefully and understood, as they provide important information on the safe handling and operation of the filter.

Keep this manual in an accessible place for future reference.

Installation must be carried out by a qualified professional in accordance with current regulations and the manufacturer's instructions. Incorrect installation may result in physical injury to people or animals, as well as mechanical damage for which the manufacturer cannot be held responsible under any circumstances.

After unpacking the filter, please check the contents for any damage.

Before connecting the filter, check that the data given in this manual is compatible with the actual installation conditions and does not exceed the maximum authorised limits for the product in question.

In the event of a fault and/or malfunction, the power supply to your technical room must be cut off and no attempt must be made to repair faults on the tank. Repair work must only be carried out by an authorised technical assistance service using original spare parts.

Failure to comply with the above clauses may adversely affect the safe operation of the filter.

To ensure that the filter remains efficient and in good working order, it is important to ensure that it is regularly maintained in accordance with the instructions supplied.

If the filter is sold or transferred, always ensure that all the technical documentation is passed on with the equipment to the new owner.

This filter is designed exclusively to treat swimming pools. All other uses must be considered inappropriate, incorrect or even dangerous.

Any contractual or non-contractual liability of the manufacturer/distributor shall be deemed null and void for damage caused by errors in installation or operation, or by failure to comply with the instructions provided in this manual or with the installation standards in force for the equipment which is the subject of this document.

Table of contents

Packaging.....3

Safety instructions4

How it works5

Installation.....6

Commissioning.....8

How it works.9

Instructions for removing the filter.9

Instructions for reassembling the filter.9

Wintering11

Troubleshooting11

Chemical parameters of water11

Exploded views and spare parts lists12

Guarantee.....13

Packing

Your NETFLUX filter consists of 1 box, 1 bag with fittings including 1 leaflet: The tank box

contains :

FILTER	PF-NFX025	PF-NFX050	PF-NFX075	PF-NFX100
Tank	1	1	1	1
Tank cover + Pre-assembled seal	1	1	1	1
Locking ring	1	1	1	1
Nuts screwed onto the filter inlet and outlet	2	2	2	2
Filter cartridge	1	1	1	1

The sachet contains :

	PF-NFX025	PF-NFX050	PF-NFX075	PF-NFX100
Vertical outlet pressure gauge	1	1	1	1
O-rings for fittings	2	2	2	2
1.5" / 50mm fitting	2	2	2	0
2" / 63mm fitting	0	0	0	2
Drain screw with O-ring	1	1	1	1
Drain plug	1	1	1	1
Multilingual manual	1	1	1	1

Safety instructions

The installation and maintenance of the upstream electrical parts must be carried out by a professional electrician. Otherwise there is a risk of electrocution, serious injury, material damage and even life-threatening consequences.

Before any maintenance or operation, make sure that all the machines, in particular the circulation pump, are switched off so that the filter is no longer under pressure:



Never unscrew the cover ring while the pump is running.

Clean the pump pre-filter regularly to ensure that the water circulates properly and without excess pressure.

In low-temperature conditions, particularly when active wintering is no longer possible (ask your dealer for advice), we strongly recommend that you drain the water from the filter using the drain screw at the bottom of the tank.

Do not operate without water and do not connect the filter directly to the water supply network, as the pressure of some distribution networks may be higher than the maximum working pressure of the filter.

Check that your equipment is compatible with each other, in particular the flow rates and working pressures, as well as the planned dimensions for the volume of water to be treated.

To ensure the transparency and integrity of the plastics, do not clean the filter with products that degrade plastics (detergents, solvents, etc.).

Be careful not to break the various plastic parts, and there is no need to overtighten the screws/nuts.

Always maintain the right level of disinfectant and a pH of around 7.2.

The person responsible for the installation must read this manual carefully. If any incorrect or erroneous operation occurs, please contact your nearest authorised dealer or technical support service.

In the event of a damaged part, please give priority to the purchase of a replacement part from the manufacturer or an authorised dealer.



FAILURE TO OBSERVE THESE WARNINGS MAY RESULT IN MATERIAL DAMAGE, ELECTRIC SHOCK, COMPLICATIONS, OTHER SERIOUS INJURY OR DEATH.

CAUTION - To avoid any risk of injury, do not allow children to use this appliance.

WARNING - Intensive use of the pool and high temperatures may require long filtration times (even 24 hours a day) to maintain a satisfactory level of cleanliness and water quality.

Principle of operation

Your pool filter is the main component of your technical room, ensuring that your water is clean and clear, followed by the chemical treatment elements.

To do this, your pool filter contains a cartridge that mechanically eliminates all the waste, larger than the filtration fineness of the media used, suspended in the water and introduced by nature or by swimmers.

The pool water is drawn through the pipe system and drawn into the filter by the filtration pump.

Cartridge filtration is a pool water purification method renowned for its simplicity and effectiveness.

The process begins when the pool water enters the filter, passing through a cartridge made up of a single element.

This cartridge acts like a filter, trapping particles suspended in the water and allowing clean water to be returned to the pool. As impurities, such as dust, accumulate in the cartridge element, the water pressure increases, resulting in a reduction in flow.

When the pressure reaches a level deemed unacceptable, the cartridge element must be removed for cleaning.

Generally, a simple spray wash using a hose is enough to restore the filter's efficiency.

This step ensures that the filtration system operates at optimum efficiency and maintains the quality of the pool water at satisfactory levels.



To ensure optimum water quality, it is important that the filtration time is long enough, a good estimate is :

$$\text{Filtration Time} = \text{Water T}^{\circ} / 2$$

But if the water temperature is above 26°C, additional filtration time may be required, until continuous filtration (24 hours a day) is achieved above 30°C.

Installation

Preamble

Before starting installation, check that your equipment is compatible with each other (flow rates and working pressure) and that it is sized for the volume of water to be treated.

Model	PF-NFX025	PF-NFX050	PF-NFX075	PF-NFX100
Filtration area (m2)	2,25	4,63	7,00	9,40
Filtration flow rate (m3/h)	4,0	8,0	11,0	13,0
Maximum flow (m3/h)	5,5	11,4	17,0	22,9
Max. working pressure (bar)	2,5	2,5	2,5	2,5
Height (mm)	445	625	805	985
Max. temperature (°C)	40	40	40	40
Pool volume (m³)*	25	50	65	80

* Calculation based on average water recycling over 6 hours.
** Estimated filtration rate based on an approximate filtration speed of 1.7 m3/h/m2.

Only simple tools (screwdrivers and spanners) and PVC pipe adhesive are needed to install and maintain the filter.

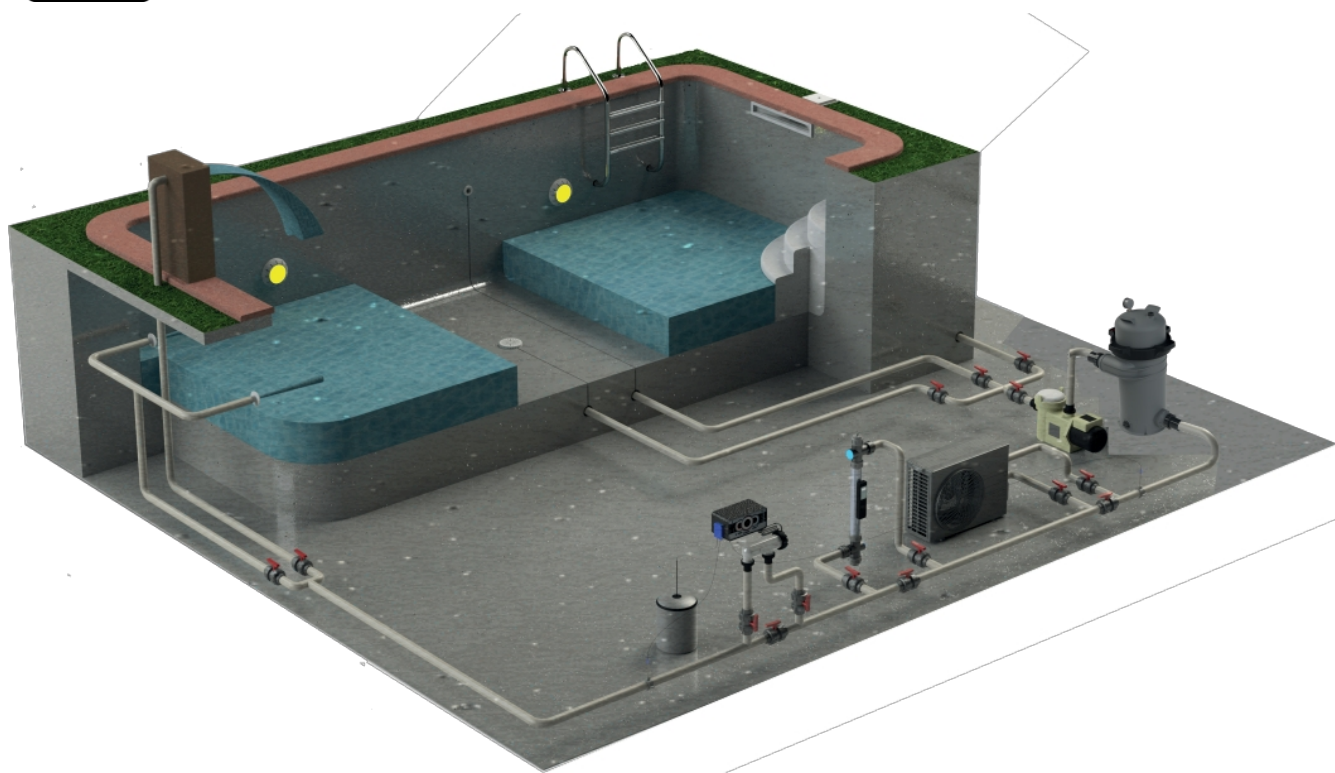
The filter must be installed on a flat concrete surface or equivalent very firm ground.

Position the filter so that the connections are accessible for use and maintenance.

Ideally, the filter should be installed as close as possible to the pool in the equipment room, preferably 50cm below the water level.



Always use PVC swimming pool pipes of the correct diameter.

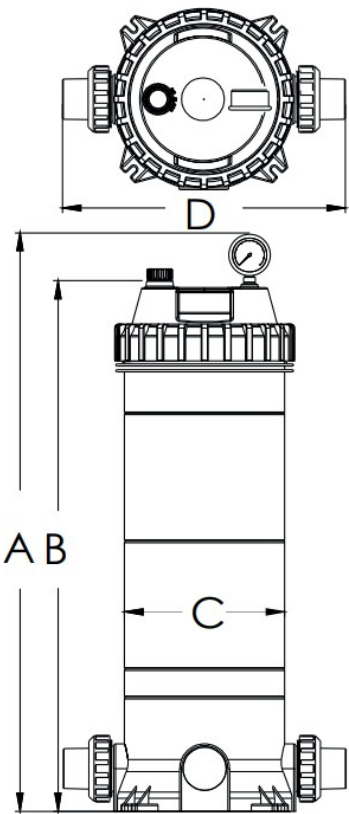


Installation

This product should only be installed and maintained by a qualified swimming pool professional.

- 1. The filtration system should be installed on a flat concrete slab or other rigid base. Choose a well-drained and ventilated location that will not flood in the event of rain. Position the filter so that pipe connections and the winter drain are convenient and accessible for operation, servicing, maintenance and wintering.
- 2. Position the filter body so that all the operating and safety labels are visible.
- 3. Position the filter so that it drains by gravity.
- 4. If possible, place the pump and filter in the shade to protect them from direct sunlight.
- 5. Connect the pool suction plumbing between the skimmer, the pool outlet (from the pool) and the pump.
- 6. Install the plumbing from the filter to the pool (back to the pool).
- 7. Do not place the pump controls above or near the filter.
- 8. Check that the water draining from the drain plug is directed away from electrical appliances.

Model	Height A (mm)	Height B (mm)	Diameter C (mm)	Diameter D (mm)
PF-NFX025	445	387	225	397
PF-NFX050	625	567	225	397
PF-NFX075	805	747	225	397
PF-NFX100	985	927	225	397



Commissioning

Before starting the pump :

1. Use ONLY Netflix system components.

Make sure the filter cover and reservoir are properly secured. Check that the filter drain plug is in the LOCKED position and that none of the filter components are missing, damaged or not original to Netflix.

2. Check that the valves on the suction and discharge pipes are open. Check that the air bleed plug on the filter cover is open and that the cover locking system is in place and operating safely.

Starting the pump



Do not approach the pump during start-up. Pool and spa circulation systems operate under high pressure. When any part of the circulation system (i.e. shut-off ring, pump, filter, valves, etc.) is serviced, air can enter the system and become pressurised.

It is essential to secure the filter cover and the pre-filter cover to prevent any violent release of pressure. In addition, make sure that the air vent plug on the filter is open and wait for all the pressure in the system to be released before removing the cover to access the basket and carry out cleaning. This safety procedure is essential to avoid any risk of injury when servicing the pool or spa circulation system.

1. When starting the filtration pump, do not stand above or near the filter. If a water leak appears at the clamp, stop all the pumps in the system and cut off all the electrical supply. Do not return to the filter until the water leak has stopped. Reassemble the clamping system following the instructions on the previous page of this user manual.
2. Return to the filter and DO NOT close the manual air vent valve unless a steady stream of water is coming out of it, not air or an air-water mixture.

How it works

Filtration starts as soon as there is a regular flow through the filter. As the filter removes impurities from the pool water, these impurities build up and create resistance to the flow. As a result, the pressure increases and the flow rate decreases.

1. Record the initial starting pressure, which corresponds to the pressure reading when a new filter element is in service under filtration conditions.

2. Each time you install a "new filter element" or clean a "filter cartridge element", make sure the system is in filtration mode, then turn the arrow on "START" to the position indicated by the needle on the pressure gauge to record the start-up pressure. Monitor the pressure from time to time. When the pressure reading exceeds the "CLEAN FILTER" mark, follow the instructions given in the "cartridge removal" section to clean the filter cartridge elements.



Filter removal instructions

1. Switch off all the system's circulating pumps and all the electrical power to the equipment block.
2. Place all the valves in the system in a position that prevents water from flowing towards the filter.
3. Open the air vent plug.
4. Remove the drain plug and allow the water to drain from the filter.
5. Unscrew the locking ring (anticlockwise).
6. Lift the filter cover with its clamping ring. Do not hold the pressure gauge to lift the cover.
7. Remove the element from the cartridge.

Removing the cartridge

1. Remove the filter cartridge element by tilting it slightly and lifting it out.
2. Clean the filter cartridge element.

Cleaning the cartridge

The cartridge filter element can be washed inside and out with a garden hose. For best results, after washing the cartridge with a hose, brush the pleated surface carefully to remove any fine particles. Do not use high-pressure water for washing as this could damage the filter element. You may find debris on the pleats of the cartridge, which may not have been removed by jet washing.

Instructions for reassembling the filter

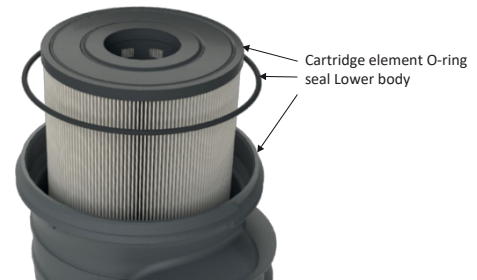
Re-installing the cartridge

1. Rinse and remove impurities and debris from the bottom of the lower filter housing.
2. Rinse any impurities and debris from the upper filter housing and around the air outlet area.
3. Carefully replace the cartridges on the lower manifold hubs.
4. Place the cover firmly on top of the cartridge.

Instructions for reassembling the filter

Clean sealing ring and sealing surface

1. Remove the O-ring seal from the filter tank.
2. Using a clean cloth, wipe the surface of the bottom seal of the filter body and clean the seal of any dirt and debris. Do not use solvents.
3. Using a clean cloth, wipe the upper sealing surface of the filter body.



Reassembling the body and bushing

1. Place the O-ring seal on the cover. Place the cover with the seal on the tank.
2. Tighten the locking ring (c l o c k w i s e) until it stops.
3. Make sure that the cover and tank are correctly locked with the locking ring.

NOTE: DO NOT STRIKE OR TAP THE CLAMPING RING WITH A HAMMER OR METAL TOOLS.

4. Make sure the filter drain plug is in the OPEN position and that no components are damaged or missing.
5. Make sure the drain plug is closed.
6. Open all the valves in the system to allow the pool water to circulate and flow into the filtration system and through the filter into the pool.
7. Wait for the water to come out of the air vent plug, then close it completely.

Pool vacuum-cleaning

Suction can be carried out directly into the filter (if necessary). Clean the cartridge after vacuuming (if necessary).

Wintering

In areas where temperatures below freezing can be expected, the filter should be drained to protect it from damage.

- 1. Follow the steps in the "Filter removal instructions" section to remove and clean the cartridge.
- 2. Reinstall the cartridge in the filter.
- 3. Tighten the locking ring securely during storage.
- 4. Refit the filter in accordance with the filter refitting instructions.
- 5. Be sure to leave the drain plug loose during the winter to avoid cracking the body.

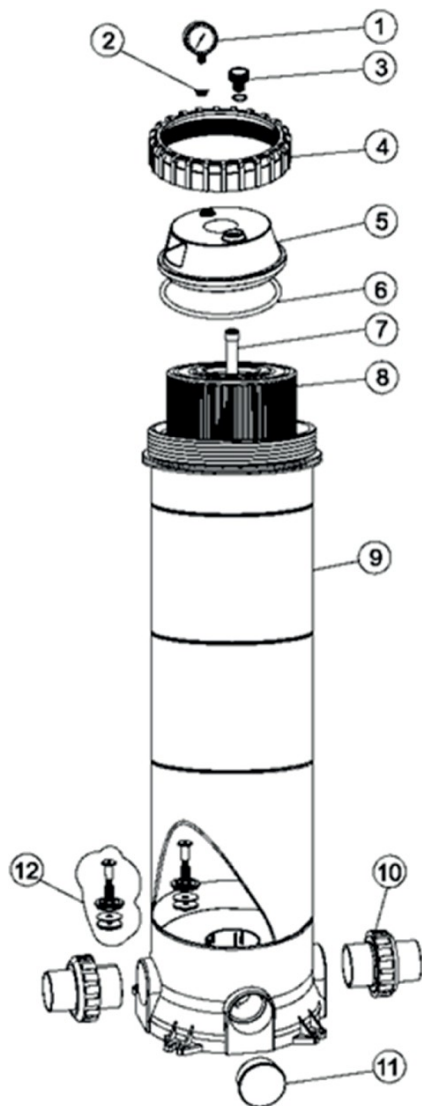
Troubleshooting

	Low water flow	Filtration cycles	Pool water remains cloudy
SOLUTION	<div>1. Check that the skimmer and pump baskets are free of debris.</div> <div>2. Check that there are no restrictions in the suction and discharge pipes.</div> <div>3. Check that there are no air leaks in the suction pipe (bubbles go into the pool).</div> <div>4. Do not remove the filter cartridge.</div>	<div>1. Check the pool for algae and super-chlorinate if necessary.</div> <div>2. Make sure chlorine and pH levels are within an appropriate range (re-justify if necessary).</div>	<div>1. Check the chlorine, pH and total alkalinity levels and readjust if necessary.</div> <div>2. ensure that the filter has sufficient flow time.</div> <div>3) Run the filter for longer periods.</div>

Chemical parameters of water

SUGGESTED CHEMICAL LEVELS FOR SWIMMING POOLS	
pH LEVEL	6.8 à 7.6
TOTAL ALKALINITY	80 to 120 ppm
CALCIUM HARDNESS	200 to 400 ppm
COMBINED CHLORINE	0.2 ppm maximum
CHLORINE (STABILISED)	1.0 to 3.0 ppm
CHLORINE STABILISER (Cyanuric acid)	30 to 80 ppm

Exploded view and filter parts



NO.	Code	Description	Qty
1	6011032	Pressure gauge with O-ring	1
2	1111048	Pressure gauge connector	1
3	89010701	Drain plug	1
4	1021006	Cover clamping ring	1
5	1011002	Lid	1
6	2011034	O-ring for cover	1
7	89060103	PF-NFX025 PVC event hose	1
7	89060104	PF-NFX050 PVC event hose	1
7	89060105	PF-NFX075 PVC event hose	1
7	89060106	PF-NFX100 PVC event hose	1
8	914100012	PF-NFX025 Cartridge	1
8	914100013	PF-NFX050 Cartridge	1
8	914100014	PF-NFX075 Cartridge	1
8	914100015	PF-NFX100 Cartridge	1
9	89060116	PF-NFX025 filter housing	1
9	89060117	PF-NFX050 filter housing	1
9	89060118	PF-NFX075 filter housing	1
9	89060119	PF-NFX100 filter housing	1
10	89060114	1.5" union	2
10	89060115	2" union	2
11	1011015	Plug	1
12	89060109	Drain valve	1

Garantie

Poolstar garantit le propriétaire original contre les défauts de matériel et de fabrication dans le Poolex NETFLUX filtre pour une période de **cinq (5) ans** pour le tank et **deux (2) ans** pour les autres parties **à l'exception des pièces d'usure (joint, bouchon de drainage, cartouche)**.

La garantie prend effet à la date de la première facture et à la présentation de la facture d'achat.

La garantie ne s'applique pas dans les cas suivants :

- Défaillance ou dommage résultant de l'installation, de l'utilisation ou de la réparation qui ne respecte pas les instructions de sécurité.
- Défaillance ou dommage causé par un environnement chimique inadapté dans la piscine.
- Défaillances ou dommages résultant de conditions d'utilisation inadaptées à l'usage prévu de l'appareil.
- Dommages causés par négligence, accident ou force majeure.
- Défaillances ou dommages causés par l'utilisation d'accessoires non autorisés.

Les réparations effectuées pendant la période de garantie doivent être approuvées avant d'être effectuées et confiées à un technicien agréé. La garantie sera nulle si l'appareil est réparé par une personne non agréée par Poolstar.

Les pièces de garantie seront remplacées ou réparées à la discrétion de Poolstar. Les pièces défectueuses doivent être retournées à notre usine dans la période de garantie pour être couvertes. La garantie ne couvre pas les coûts de main d'œuvre ou de remplacement non autorisés. Le retour de la pièce défectueuse n'est pas couvert par la garantie.

Madame, Monsieur,

Une question ? Un problème ? Ou simplement enregistrer votre garantie, retrouvez-nous sur notre site internet :

<https://assistance.poolstar.fr/>

Nous vous remercions de votre confiance
et vous souhaitons une excellente baignade.

Vos coordonnées pourront être traitées conformément à la Loi Informatique et Liberté
du 6 janvier 1978 et ne seront divulguées à quiconque.